

HabasitLINK[®]

M2540 Roller Top 1"

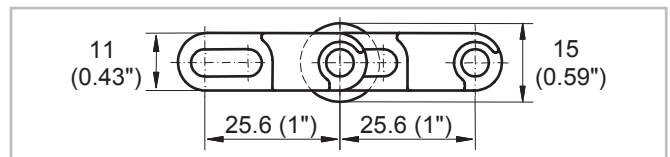
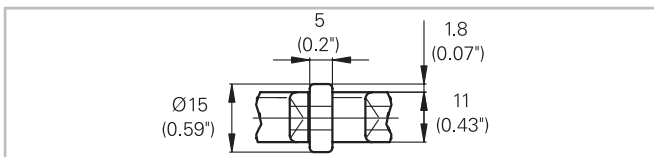
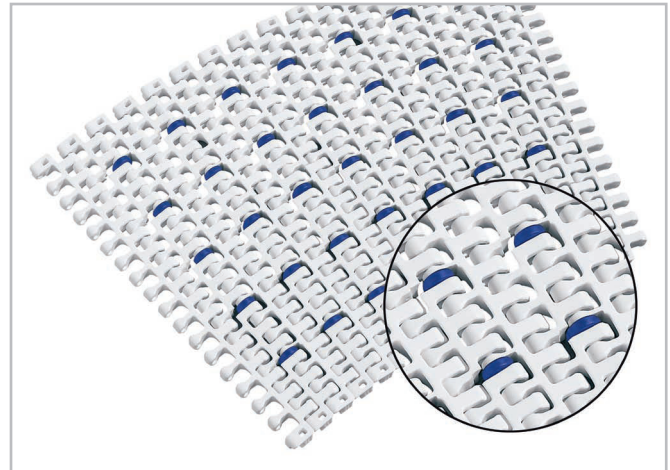


Your Source For Habasit
Belting And Chain

www.StilesEnterprises.com • 1-800-325-4232

Description

- For radius and straight conveying
- Collapse factor 2.2 (unchanged)
- 35 % open area; largest opening 6x12.5 mm (0.24"x0.49")
- Roller lateral spacing 50 mm (2")
- Minimum free edge 42 mm (1.6")
- Rollers row spacing 50.8 mm (2")
- For low back pressure, wearstrips are placed between rollers
- For product driven application wearstrips are placed directly under the rollers
- Excellent for cooling and draining
- Food approved materials available
- Rod diameter 5 mm (0.2")



Belt data

Belt material		POM +JM
Rod material		PA
Roller material		POM
Roller lateral spacing per row	mm / inch	50 / 2
Roller dimension diameter / width	mm inch	Ø 15 / 5 Ø 0.59 / 0.2
Nominal tensile strength F _N straight run	N/m lb/ft	22000 1507
Nominal tensile strength F _N in curve ⁽¹⁾	N lbf	1200 270
Temperature range	°C °F	-40 - 93 -40 - 200
Belt weight m _B	kg/m ² lb/sqft	7.0 1.44

⁽¹⁾ For b₀ > 300 mm (12") higher values admissible. Refer to LINK-SeleCalc

Diameter of idling rollers (minimum)		Diameter of support rollers (minimum)		Diameter for gravity take-up and center drive rollers (minimum)		Backbending radius for elevators without sideguards or hold down devices (minimum)	
mm	inch	mm	inch	mm	inch	mm	inch
40	1.6	50	2	100	4	150	6